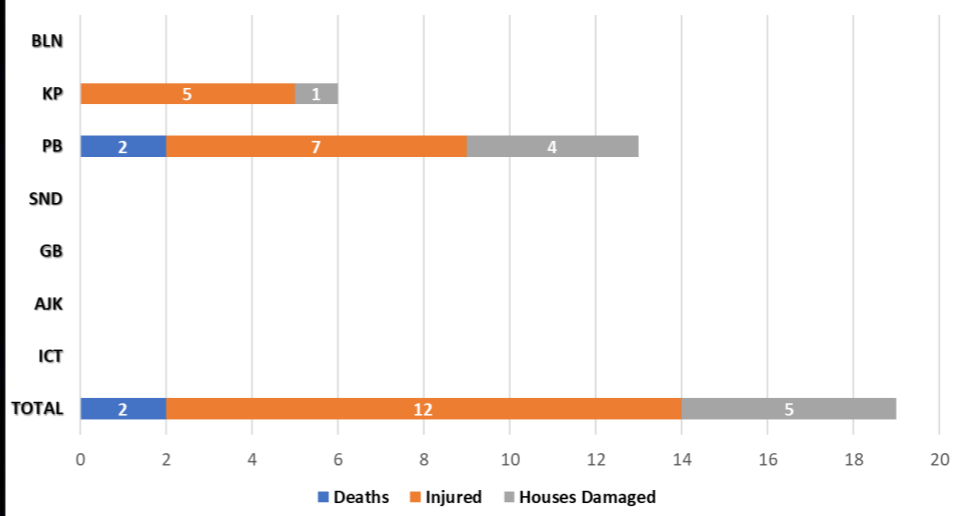


TOP RAINFALL RECORDED LAST 24 HOURS (MM)

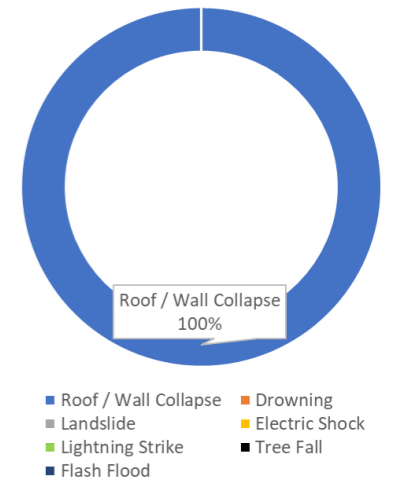
- Balochistan.** Barkhan 4
- Khyber Pakhtunkhwa.** Daggar 25, Besham 15, Tarbela 10, Peshawar 8, Oghi 7, Balakot 6, Bajaur Pasht 6, Shinkiari 3, Mardan 1, Kakul 1, Saidu Sharif 1, Buner 1
- Punjab.** Murree 34, Rawalpindi 4, Jhang 1
- Sindh.** Tando Jam 4
- Gilgit-Baltistan.** Bagrote 4, Gupis 1
- State of AJ&K.** Rawalakot 22, Chakoti 18, Chatar Kalas 9, Muzaffarabad 7, Garhi Dupatta 3, Bandi Abbaspur 1, Hajira 1, Panjera 1
- ICT.** Bokra 5

Data Source: PMD

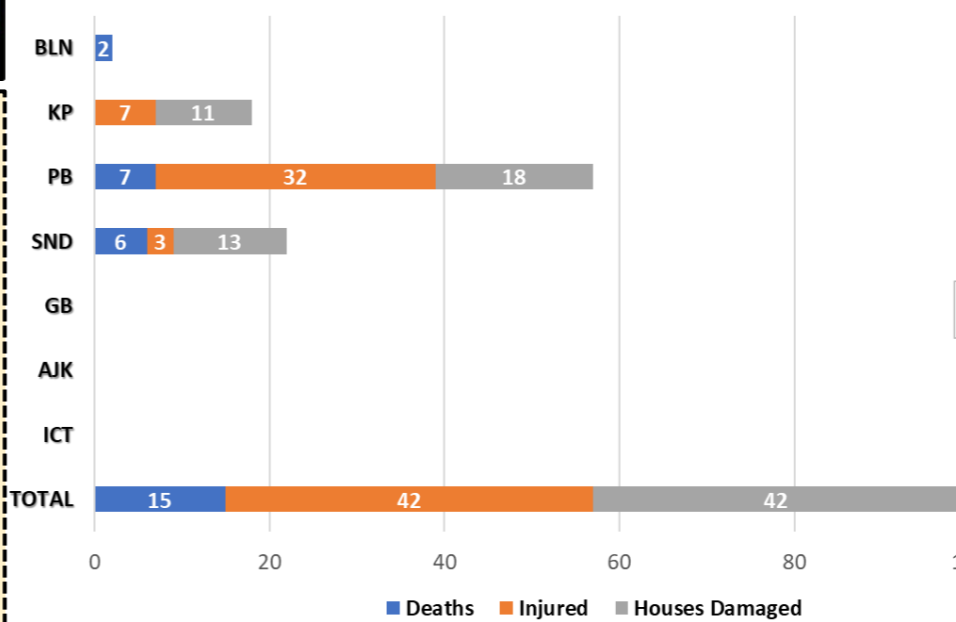
Losses & Damages Last 24 Hours



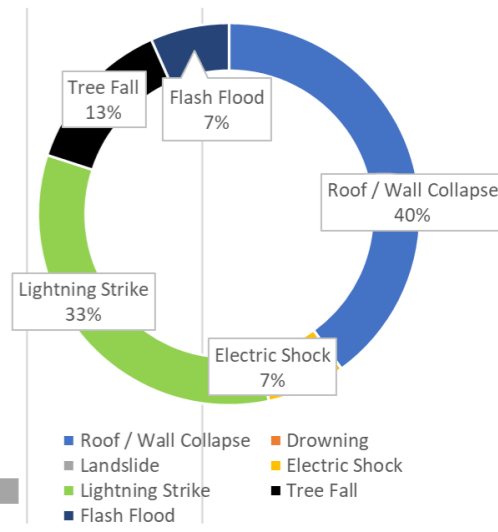
Last 24 Hrs Deaths Categorization



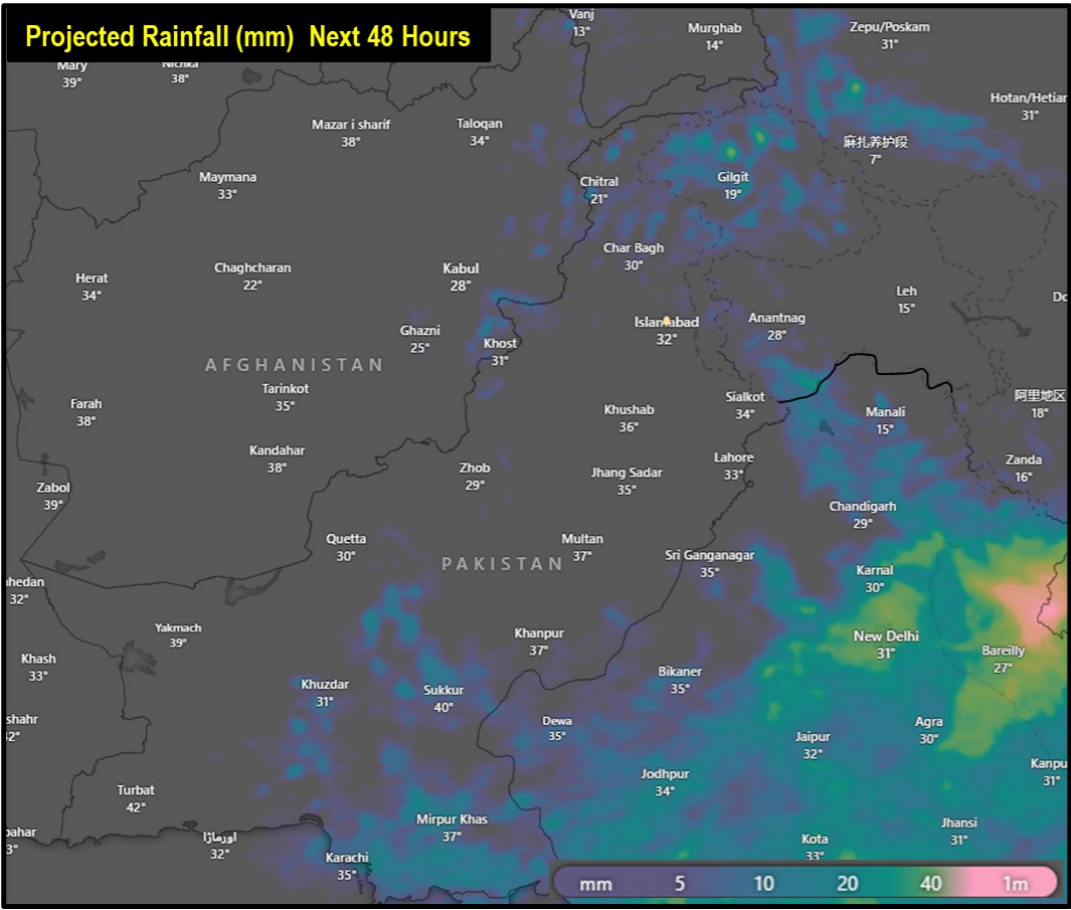
Cumulative Losses & Damages (1 Jul - 8 Jul)



Cumulative Deaths Categorization



Note: Losses / Damages data is provided by PDMAs / GBDMA / SDMA / Govt Depts and is preliminary.



FORECASTED IMPACT NEXT 24-48 HOURS

- Balochistan.** **Mainly hot and humid weather** is expected in most districts of the province. However, **rain-windstorm / thundershowers with isolated heavy falls** are likely in Zhob, Barkhan, Shirani, Musa Khel, Kohlu, Sibbi, Dera Bugti, Naseerabad, Loralai, Khuzdar and surroundings.
- Khyber Pakhtunkhwa.** **Rain-wind / thundershowers** expected in Galiyat, Balakot, Mansehra, Abbottabad, Buner, Malakand, Chitral, Dir, Swat, Shangla, Battagram, Haripur, Swabi, Mardan, Nowshera, Peshawar, Kohat, Hangu, Kark, Tank, Khyber, Mohmand, Bajaur, Karam, Lakki Marwat, Waziristan, Bannu and Dera Ismail Khan. **Heavy falls** are also expected at **isolated places** in upper parts.
- Punjab.** **Rain-windstorm / thundershowers** expected at **isolated places** in Murree, Rawalpindi, Jhelum, Chakwal, Attock, Gujrat, Gujranwala, Narowal, Sialkot, Lahore and Okara, Layyah, Bhakkar, Taunsa, D G Khan, Multan, Sahiwal, Khanewal, Bahawalnagar, Bahawalpur, Rajanpur and Rahim Yar Khan.
- Sindh.** **Mainly hot and humid weather** is expected in most districts of the province. However, **rain windstorm / thundershowers** likely in Jacobabad, Kashmore, Sukkur, Shikarpur, Ghotki, Qambar Shahdadkot, Larkana, Dadu and coastal areas.
- Islamabad Capital Territory.** Partly cloudy weather with **rain-windstorm / thundershowers** expected while, **isolated heavy falls** are also likely during nighttime
- Gilgit Baltistan.** **Rain-wind / thundershowers** expected at isolated places.
- State of AJ&K.** **Rain-wind / thundershowers** expected at isolated places.
- Flash flooding and landsliding** in hilly / mountainous regions of **Balochistan, KP, GB and AJ&K**
- Increased Temperatures & Rains** may trigger **GLOF Incidents** in vulnerable valleys of **KP and GB**
- Hill Torrents** along **Kirthar & Koh-e-Sulaiman Ranges** **likely to affect at-risk areas** of Balochistan and Punjab.
- Urban Flooding** in municipal areas, i.e. **Lahore, Sialkot, Gujranwala, Narowal, Rawalpindi, Faisalabad, Peshawar.**

GUIDANCE ISSUED

- PDMA's to ensure **early warning & prompt response** in **vulnerable areas** in light of forecasted conditions
- PDMA KP and Punjab to **ensure timely evacuation** of **at-risk population** from **low-lying areas** of River Kabul and River Chenab Downstream Marala
- PDMA's to undertake **regular public awareness on all media channels / social media** to maximise general public's knowledge on **risks associated with monsoon season**; heavy rains, urban flooding, flash flooding, landslides, etc.
- City / District Administrations** are to **ensure contingency plans** for areas vulnerable to flooding in urban centres, catering for **prompt de-watering operations in flooded areas.**
- NHA / FWO / Local C&W Depts** to **ensure pre-placement of machinery** and **timely restoration of damaged road linkages.**
- Rescue Services, Armed Forces** and leading **NGOs / CSOs** to **ensure availability of personnel / equipment** in the indicated areas & **be on stand-by for rapid response.**
- Ensure that **public avoid crossing nullahs** and **keep livestock away during adverse weather conditions.**
- Ensure that **public Does Not Venture Outside** during **Thunderstorms** and **Do Not Seek Shelter Under Trees** to **avoid risk of lightning strike.**
- Ensure that **public undertakes adequate measures** to **maintain their homes** from **adverse effects** of **heavy rainfall** in order to **avoid roof / wall collapses.**
- Additional **guidance** is available on **NDMA Website** and **"Pak NDMA Alert"** app available on Google **Play Store** and iOS **App Store.**

Pakistan Reservoirs Data (8 Jul - 0600 hours)		
Details	Tarbela Dam	Mangla Dam
MCL (Feet)	1,550.00	1,242.00
Dead Level (Feet)	1,402.00	1,050.00
Water Level (Feet)	1,514.49	1,192.05
Change Last 24 hrs (Feet)	+4.29	+1.25
Storage (MAF)	Max	7.356
	Present	3.773
Change Last 24 hrs	+0.212	+0.075
% Dam Filled	66.00	51.85
% Change Last 24 hrs	+3.00	+1.03

Indian Dams Data (5 Jul - 0600 hours)			
Details	Bhakra	Pong	Thein
MCL (Feet)	1,680.00	1,390.00	1,732.00
Water Level (Feet)	1,590.40	1,306.79	1,646.24
Change	+6.01	-0.29	-1.48
Storage (MAF)	Max	4.991	1.900
	Present	1.696	0.924
Change	+0.14	-0.008	0
% Dam Filled	34	19	31
% Change	+3	0	0

FFD Discharge Report			
Recorded at: 08-Jul-2024 12:00 PST			
River	Site	Inflow	Outflow
Indus	Tarbela	235,000	148,200
	Kalabagh	229,129	221,189
	Chashma	222,704	218,454
	Taunsa	218,213	189,413
	Guddu	168,618	127,090
	Sukkur	100,135	50,300
Kabul	Kotri	24,310	1,485
	Nowshera	80,400	80,400
Jhelum	Mangla	56,000	20,000
	Rasul	8,081	5,341
	Marala	50,885	19,060
Chenab	Khanki	49,885	42,346
	Q.Abad	49,562	30,037
	Trimmu	39,219	23,669
	Panjinad	19,999	6,599
Ravi	Jassar	4,154	4,154
	Shahdara	16,985	16,985
	Balloki	35,325	8,525
Sutlej	Sidhnai	17,744	2,644
	GS Wala	2,810	2,810
	Sulemanki	20,651	9,495
	Islam	4,944	2,944